

New Parents Information Evening

Welcome and Introduction

Mr R Warburton, Headteacher

Overview of Transition Process

Mrs L Kane, Deputy Headteacher

Mrs H Marklove, Learning Leader: Year 7

Year 7 Student experiences

Francis, Malina, Jack & Ivy



COME IN
ENGAGE
PLEASE W



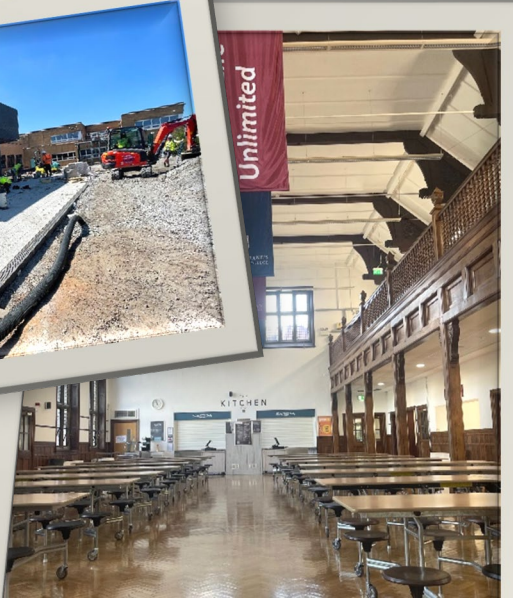
STAFF ONLY



195

THE SANER MEDAL
FIDE ET VIRTUTE

1877 BARBER - JOHN - F.	1884 CLAYTON - H. ROY -
1883 MORRISON - J. EUGENE	1885 CLARKE - REGINALD
SHAW - RUTHBERT	CRAWFORD - JOAN - W.
1894 ABERNETHY - JAMES - F.	1896 KEMPE - THOMAS - W.
ROSE - DOUGLAS - D.	1897 BERNETT - ELIZABETH - M.
1895 PACE - JAMES	1898 PATTERSON - HENRIETTA - M.
SHAW - ELIZABETH - L.	1899 SHALLOCK - DAVID - B.
1900 COWLEY - ROSE - B.	1900 ROBERTSON - NANCY - F.
KNEIGHT - MARJORIE	1901 DONE - GEORGE - F.
1907 DYAN - H. KENNETH	1902 MOORE - LAURA
JACKSON - DORIS	1903 MOORE - LAURA
1918 PEARCE - CECIL	1904 NO - JAMES
THORPE - KATHLEEN	1905 TOWERS - ETHEL
1923 SEAW - SAMUEL - H.	1906 JAMES - LESLIE - H. P.
PARKE - PHYLLIS	1907 CASHMORE - DEIRDRE
1930 MARSH - JOHN - M.	1908 CROFT - PETER - G.
1931 GARDNER - H. DASHWOOD	1909 BRADLEY - EVELYN
STAGG - DOUGLAS - B.	1910 OWEN - ROBERT - R.
1932 BLAIN - JOHN - J.	1911 GORMING - RONALD - A.
PENDLEBURY - BETTY	1912 CAPPERS - SYLVIA - D.
	1913 MURPHY - ANNE - C.



Our History

- 1557 Witton Grammar School Opens - a private boarding school for boys
- 1910 Renamed Sir John Deane's Grammar School – *amalgamated with Northwich High School for Girls*
- 1957 Northwich County Grammar School for Girls opened, including a sixth form



Northwich County Grammar School for Girls.

NCH.51





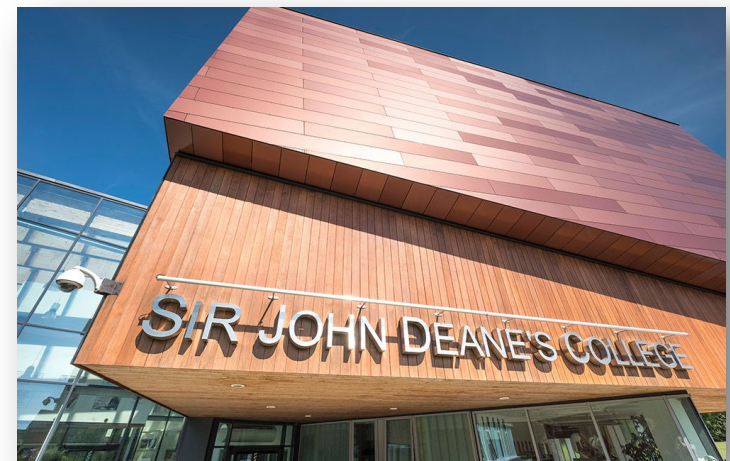
Northwich County Grammar School for Girls.

Our History

- 1557 Witton Grammar School Opens - a private boarding school for boys
- 1910 Renamed Sir John Deane's Grammar School – *amalgamated with Northwich High School for Girls*
- 1957 Northwich County Grammar School for Girls opened, including a sixth form
- 1978 Renamed Leftwich High School (co-educational, 11-16)
- 1978 Boys' Grammar School becomes Sir John Deane's Sixth Form College
- 1992 Renamed The County High School Leftwich (CHSL)
- 2016 Judged Outstanding by Ofsted
- 2019 CHSL joined The Sir John Brunner Foundation

The **Sir John Brunner Foundation**

Excellence, Belonging, Partnership



Our History

- 1557 Witton Grammar School Opens - a private boarding school for boys
- 1910 Renamed Sir John Deane's Grammar School – *amalgamated with Northwich High School for Girls*
- 1957 Northwich County Grammar School for Girls opened, including a sixth form
- 1978 Renamed Leftwich High School (co-educational, 11-16)
- 1978 Boys' Grammar School becomes Sir John Deane's Sixth Form College
- 1992 Renamed The County High School Leftwich (CHSL)
- 2016 Judged Outstanding by Ofsted
- 2019 CHSL joined The Sir John Brunner Foundation
- 2022 Ofsted Outstanding judgements maintained by CHSL and SJD

- 'This is a **friendly and welcoming** school '
- 'staff have **very high expectations**'
- 'a **broad, ambitious and exciting** curriculum'
- Students '**achieve highly**, fulfilling their academic potential' and are
- '**exceptionally well prepared** for the next phase.'

Outstanding (Ofsted, April 2022)



Our History

- 1557 Witton Grammar School Opens - a private boarding school for boys
- 1910 Renamed Sir John Deane's Grammar School – *amalgamated with Northwich High School for Girls*
- 1957 Northwich County Grammar School for Girls opened, including a sixth form
- 1978 Renamed Leftwich High School (co-educational, 11-16)
- 1978 Boys' Grammar School becomes Sir John Deane's Sixth Form College
- 1992 Renamed The County High School Leftwich (CHSL)
- 2016 Judged Outstanding by Ofsted
- 2019 CHSL joined The Sir John Brunner Foundation
- 2022 Ofsted Outstanding judgements maintained by CHSL and SJD
- 2023 New building opened





Achieving Excellence *for all*



- **Aspiration** - *Aim high, dream big*



- **Kindness** - *caring for yourself and others*



- **Pride** - *in who you are and the success of others*



*'Teachers use their expert
subject knowledge to help
pupils.'*





Enrichment Provision and Celebrating Success





Northwich County Grammar School for Girls

Mrs L Kane

Deputy Headteacher

Overview of transition process

Date	Time	Event
April - June		Primary school visits (in person or TEAMS)
Wednesday 18th June	Drop in between 4 – 6pm	Registration for cashless catering and pre-loved uniform shop
Tuesday 24th June	6.00pm	Parent/Carer and Student Information Evening (plus Pre-loved uniform shop)
Wednesday 2nd/Thursday 3rd July	9am – 3pm	2 Day Transition Visit
Tuesday 2nd September	8.40am-3.20pm	School year starts

Parent/carer surveys - transition



My child has made a successful transition to high school	99% agree or strongly agree
My child is happy	96% agree or strongly agree
My child feels safe	98% agree or strongly agree
The school manage behaviour well	92% agree or strongly agree (4% don't know)
The uniform changes have been positive	96% agree or strongly agree

Transition at CHSL

April – June

Information gathering and primary school visits



New event** Wednesday 23rd April – 3.30-4.30 - drop in to see if your child may be entitled to extra support



June

18th June registration for catering + opportunity to buy pre-loved uniform

Forms are created and will be sent out week beginning Monday 23rd June

24th June – Parent/Carer and Student Information Evening

Transition at CHSL

July 2nd and 3rd Transition Days

Students given a timetable

Taster lessons in subjects they will study

Get to know staff, students and the school



Transition at CHSL

September

Tuesday 2nd September – 1st day of Year 7



First 2 weeks

Junior Leadership Team (Yr 11s) guide students around from lesson to lesson

Welcome to
Year 7



The
COUNTY
HIGH SCHOOL
Leftwich

'The way we do things here'

Name:

Form:

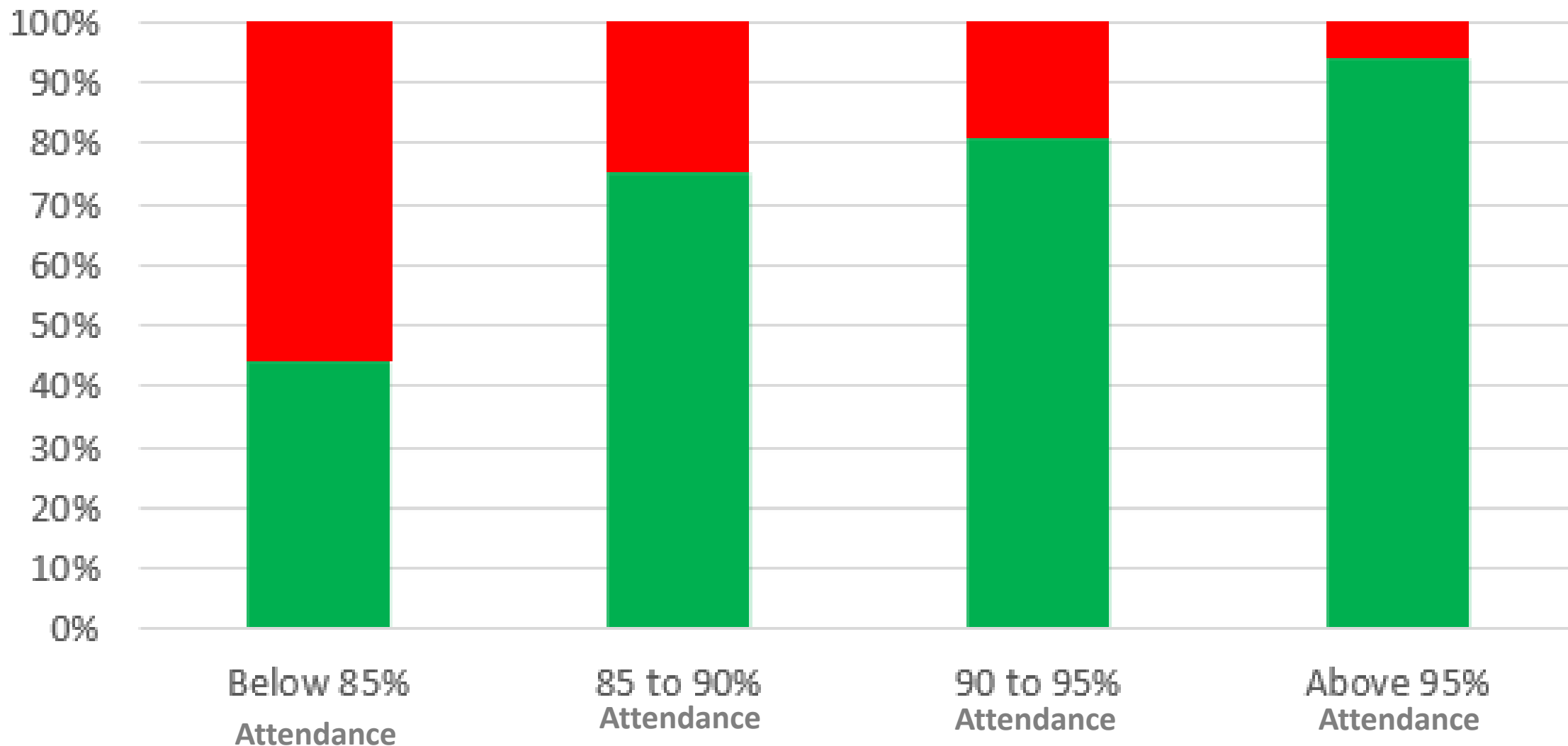
Ensuring a smooth transition

**Expectations broken down for
Year 7 students with particular
emphasis on:**

1. The 'basics' - uniform,
attendance and punctuality
2. Routines – start, end of lessons,
corridors
3. Kindness, respect and
belonging
4. Bullying and racism prevention

Attendance and belonging

- Number one factor in ensuring success at school
- Keeps students in crucial habits
- Allows students to be social and to attend enrichment – to belong
- **We need your support!**



■ Achieve 4+EM

■ Don't achieve 4+EM

E = English
M = Maths

GCSE grades are from 1-9

Most colleges ask for a grade 4 in English and Maths

If you are in school over 95% = you will very likely achieve this

Mrs H Marklove

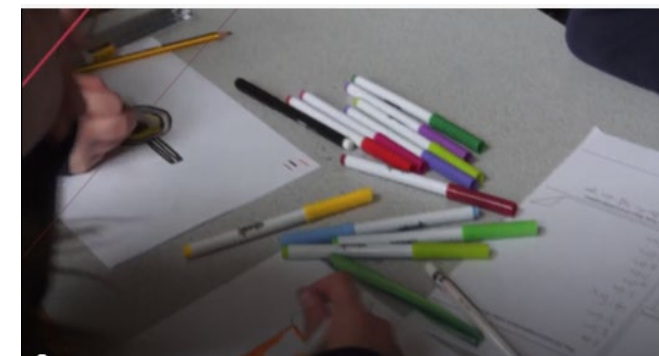
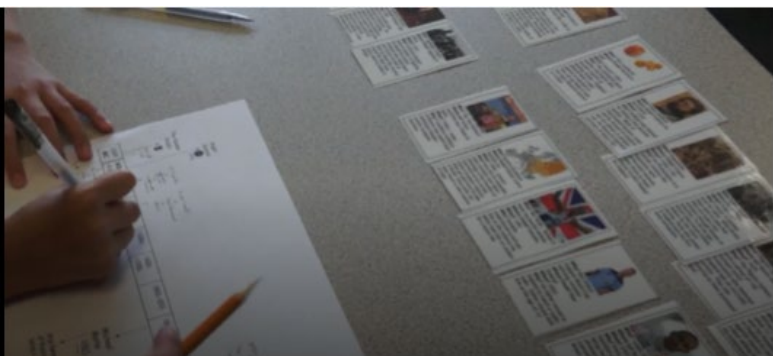
Learning Leader: Year 7

Primary Visits

- These take place in Summer term 1 (after the Easter Holidays until May half term)
- I will visit or Teams video call the Primary staff to gain information about your child following the transition grids being shared
- I will get to speak to your children in a group or on the call if there are a small number moving to us

Primary Visits

- I will show them the Primary transition video about what Life is like at Leftwich



Primary Visits

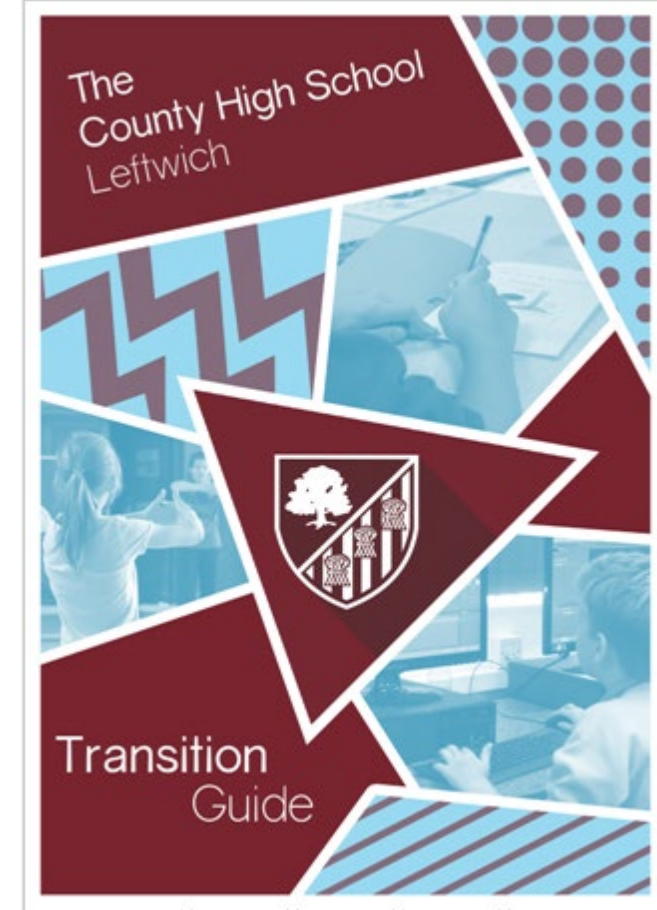
- Transition booklets will be given/sent out to all students to bring home and read through with parents/carers



Life @ Leftwich



Life @ Leftwich



Transition days project



Transition to 'Planet Leftwich'

**Making new
friendships**

Map reading

**Finding out about the
'planet'**

Team work

**Allocating role and
responsibilities**

Rocket building

School uniform

- Uniform has been a key focus this year
- Pride and belonging
- Also worked to keep the costs as low as possible
- Positive student and parent voice
- Pre-loved uniform

School uniform

- Belonging and preparing for future life
- Again, we need your support

- No jewellery (except one stud in each ear)
- Natural makeup (no eye lashes, false nails)
- Suitable skirt lengths
- Tights
- No trainers (black Nike air force are allowed)



School uniform

- Included in your welcome packs is a Sportswear International order form.
- Deadline for orders: Start of August (delivery to home address)

Student experiences

Francis - My views on the transition process from primary school to CHSL

Malina - Things that made it easier to start at CHSL

Jack - What I liked about the transition days and evenings

Ivy - Advice we can give to Year 6 coming to CHSL