

Year 9 Options Information Evening

Mrs L Measures
Assistant Headteacher

Common Subjects for all

- English – (2 GCSEs - Language and Literature)
- Maths (GCSE)
- Science - at least 2 GCSEs for all students
- EfL including core RS (non-exam)
- Core PE (non-exam)
- Geography and/or History

Science

Combined Science (Trilogy)

- Worth 2 GCSEs
- 6 exam papers: 2 Biology, 2 Chemistry and 2 Physics

Separate Sciences

- Three separate GCSEs in Biology, Chemistry and Physics
- 6 exam papers: 2 Biology, 2 Chemistry and 2 Physics

Both courses are designed to allow students to progress onto A level Sciences

Separate Science

So all students can study separate Science (if they wish to) we have two possible options:

Pathway	Hours per fortnight	Hours per Science GCSE a fortnight	Number of option choices	Total number of qualifications
Express	10 + 1 After school and 1 in Core PE = 12 lessons	4	2	10
Option	10 + 5 in Option block = 15 lessons	5	1	9

Students in the express pathway have already received their invitations from Mrs Hunt. Learning Leader of Science

An example Year 10 Timetable

	Mon	Tues	Weds	Thurs	Fri
Period 1					
Period 2				<i>English</i>	
Period 3			<i>English</i>	<i>English</i>	
Period 4					
Period 5		<i>English</i>			



An example Year 10 Timetable

	Mon	Tues	Weds	Thurs	Fri
Period 1				<i>Science</i>	
Period 2		<i>Maths</i>	<i>Science</i>	<i>English</i>	
Period 3		<i>Maths</i>	<i>English</i>	<i>English</i>	<i>Science</i>
Period 4	<i>Maths</i>	<i>Science</i>		<i>Maths</i>	
Period 5	<i>Science</i>	<i>English</i>			



An example Year 10 Timetable

	Mon	Tues	Weds	Thurs	Fri
Period 1				<i>Science</i>	
Period 2		<i>Maths</i>	<i>Science</i>	<i>English</i>	
Period 3	<i>EFL</i>	<i>Maths</i>	<i>English</i>	<i>English</i>	<i>Science</i>
Period 4	<i>Maths</i>	<i>Science</i>		<i>Maths</i>	
Period 5	<i>Science</i>	<i>English</i>			



An example Year 10 Timetable

	Mon	Tues	Weds	Thurs	Fri
Period 1		<i>MFL/Humanity</i>		<i>Science</i>	
Period 2	<i>MFL/Humanity</i>	<i>Maths</i>	<i>Science</i>	<i>English</i>	
Period 3	<i>EFL</i>	<i>Maths</i>	<i>English</i>	<i>English</i>	<i>Science</i>
Period 4	<i>Maths</i>	<i>Science</i>		<i>Maths</i>	
Period 5	<i>Science</i>	<i>English</i>		<i>MFL/Humanity</i>	



An example Year 10 Timetable

	Mon	Tues	Weds	Thurs	Fri
Period 1		<i>MFL/Humanity</i>		<i>Science</i>	<i>Geo/Hist</i>
Period 2	<i>MFL/Humanity</i>	<i>Maths</i>	<i>Science</i>	<i>English</i>	
Period 3	<i>EFL</i>	<i>Maths</i>	<i>English</i>	<i>English</i>	<i>Science</i>
Period 4	<i>Maths</i>	<i>Science</i>		<i>Maths</i>	
Period 5	<i>Science</i>	<i>English</i>		<i>MFL/Humanity</i>	



An example Year 10 Timetable

	Mon	Tues	Weds	Thurs	Fri
Period 1		<i>MFL/Humanity</i>	<i>PE</i>	<i>Science</i>	<i>Geo/Hist</i>
Period 2	<i>MFL/Humanity</i>	<i>Maths</i>	<i>Science</i>	<i>English</i>	
Period 3	<i>EFL</i>	<i>Maths</i>	<i>English</i>	<i>English</i>	<i>Science</i>
Period 4	<i>Maths</i>	<i>Science</i>		<i>Maths</i>	
Period 5	<i>Science</i>	<i>English</i>		<i>MFL/Humanity</i>	

Options choices – 2 from the following list

Art & Design	BTEC Digital Information Technology
Computer Science	BTEC Media
Design & Technology	Music
Food Preparation and Nutrition	GCSE PE (Full Course)
French or Spanish	Photography
Geography or History	RS
Separate Science	Drama
BTEC Health and Social Care	Cambridge National Sports Studies

9 GCSE's or Qualifications

- English Language
- English Literature
- Maths
- Science (2 GCSEs)
- MfL or Humanity
- Geography or History
- Options (2 GCSEs/Vocational Qualifications)

Students who are in the Separate Science express group will achieve 10 GCSEs or qualifications (due to number of option choices)

Vocational Qualifications

The four vocational courses that are offered to students are

Cambridge National Sports Studies Level 2 (OCR)

Pearson BTEC Level 2 Tech Award in Creative Media Production

Pearson BTEC Level 2 Tech Award in Digital Information Technology

Pearson BTEC Level 2 Tech Award in Health and Social Care

Department for Education judges these qualifications to be high quality and of the same standard as GCSE subjects

Some colleges currently only count GCSEs in their entry requirement.

It is important to note, the curriculum that the vast majority of students will follow, provides them with a minimum of 7 GCSEs. This is currently more than most colleges' entry requirements. Therefore, selecting one or two vocational qualifications still means that all post-16 pathways remain open.

An example Year 10 Timetable

	Mon	Tues	Weds	Thurs	Fri
Period 1	<i>Option 1</i>	<i>MFL/Humanity</i>	<i>PE</i>	<i>Science</i>	<i>Geo/Hist</i>
Period 2	<i>MFL/Humanity</i>	<i>Maths</i>	<i>Science</i>	<i>English</i>	
Period 3	<i>EFL</i>	<i>Maths</i>	<i>English</i>	<i>English</i>	<i>Science</i>
Period 4	<i>Maths</i>	<i>Science</i>	<i>Option 1</i>	<i>Maths</i>	<i>Option 2</i>
Period 5	<i>Science</i>	<i>English</i>		<i>MFL/Humanity</i>	

How to complete your option requests

Option choices will be completed either online via *Options online* (which can be accessed via www.sims-parent.co.uk) or on a paper copy that will be given to students in form on Wednesday.

Students are placed into a pathway:

The County High School, Leftwich



Year 9 Options 2025-26

EBacc Spanish Pathway

Students following the Spanish pathway will study a '**core**' of subjects in Years 10 and 11:

- > English (2 GCSEs - English Language and English Literature)
- > Mathematics (GCSE)
- > Science (2 **or** 3 GCSEs for all students)
- > Geography **or** History (GCSE)
- > EFL (non-exam)
- > Religious Studies (non exam unless chosen as one of the options)
- > Spanish (GCSE)
- > Core PE (non-exam)

The website will then guide you through each of the steps in the Options process and ask you to select your child's options choices.

Humanities

Year 9 Options 2025-26

Step 1 of 2

Students must decide to study *Geography* **or** *History* as part of their 'core' timetable.

Please note that if students wish to study both Geography and History then they may select the other course in the later option block.

For information about the syllabus' studied in both subjects, please [click on this link](#) then Curriculum at the top of the page before clicking on each subject.

You have chosen 0 of 1 ☒ courses from this list

Geography GCSE Full Course

i This course is also available in Option Choices-EBacc
Spanish

History GCSE Full Course

i This course is also available in Option Choices-EBacc
Spanish

- Students on the EBacc or Express Pathway will initially be asked to select a Humanities subject.
- Clicking on the link will take you to the curriculum pages for extra information.



The
COUNTY
HIGH SCHOOL
Leftwich

[HOME](#)[VACANCIES](#)[CONTACT US](#)[CALENDAR & EVENTS](#)[MY TOOLS](#)

The
COUNTY
HIGH SCHOOL
Leftwich

[ABOUT US](#)[KEY INFORMATION](#)[SCHOOL LIFE](#)[CURRICULUM](#)[PARENTS](#)[ADMISSIONS](#)[CURRICULUM INTENT](#)[CURRICULUM OVERVIEWS](#)[ENGLISH](#)[MATHEMATICS](#)[SCIENCE](#)[LANGUAGES](#)[GEOGRAPHY](#)[HISTORY](#)[ART & DESIGN](#)[CREATIVE COMPUTING & MEDIA](#)[DESIGN & TECHNOLOGY](#)[DRAMA](#)[EDUCATION FOR LIFE](#)[MUSIC](#)[PHYSICAL EDUCATION](#)[RELIGIOUS STUDIES](#)[LITERACY](#)[ASSESSMENT & STUDENT TRACKING](#)[EXAM INFORMATION](#)[KS4 OPTION PROCESS](#)[CAREERS](#)

Outstanding

“Pupils benefit greatly from a broad,
ambitious and exciting curriculum.”

Ofsted (April 2022)

[Find Out More](#)



EBacc

Maths, Science, English

History or Geography*

MfL

Option 1

Option 2

Core

Maths, Science, English

Geography

History

Option 1

Option 2

Engage

Maths, Science, English

Geography

History

L1 Qualification

Option 2

Humanities

Year 9 Options 2025-26

Step 1 of 2

Students must decide to study *Geography* **or** *History* as part of their 'core' timetable.

Please note that if students wish to study both Geography and History then they may select the other course in the later option block.

For information about the syllabus' studied in both subjects please [click on this link](#) then Curriculum at the top of the page before clicking on each subject.

You have chosen 1 of 1 courses from this list

Geography GCSE Full Course Choice

i This course is also available in Option Choices-EBacc Spanish

History GCSE Full Course

i This course is also available in Option Choices-EBacc Spanish

To select the requested option click on the subject name.

The box turns blue to indicate the choice has been made. Simply click on the subject again if it was selected in error.

Chosen subjects are
shown in blue.

One reserve choice
must be made also,
shown in red here.

Options for French Pathway

Step 2 of 2

Students must pick **two** courses as main choices from the subjects below that they wish to study.

A third subject must be chosen as a **reserve** choice.

For information about the syllabus' studied in each subject [click on this link](#) and then Curriculum at the top of the page before selecting the subject.

Note

Students that wish to study Geography **and** History can do so by selecting the subject not chosen in the Humanities section.

You have chosen 2 of 2 ☒ courses and 1 of 1 ☒ reserves from this list

Art GCSE Full Course	Reserve	Computer Science GCSE Full Course	Reserve	Drama GCSE Full Course	Reserve
D&T GCSE Full Course	Reserve	Food Preparation and Nutrition GCSE Full Course	Reserve	Geography GCSE Full Course	Reserve
GCSE PE GCSE Full Course <i>Choice</i>	Reserve	BTEC Digital Information Tech BTEC Tech Award Level 1/2	Reserve	History GCSE Full Course	Reserve
BTEC Creative Media Production BTEC Tech Award Level 1/2	Reserve	Music GCSE Full Course <i>Choice</i>	Reserve	PE Cambridge Nationals Certificate Level 1 & 2	Reserve
Photography GCSE Full Course	Reserve	RS GCSE Full Course <i>Reserve</i>	Reserve	Separate Science GCSE Full Course	Reserve
Spanish GCSE Full Course	Reserve				

Geography GCSE Full Course
You have selected this course in Humanities

History GCSE Full Course
This course is also available in Humanities

Options for French Pathway

Step 2 of 2



Students must pick **two** courses as main choices from the subjects below that they wish to study.

A third subject must be chosen as a **reserve** choice.

For information about the syllabus' studied in each subject [click on this link](#) and then Curriculum at the top of the page before selecting the subject.

Note

Students that wish to study Geography **and** History can do so by selecting the subject not chosen in the Humanities section.

You have chosen 2 of 2  courses and 1 of 1  reserves from this list

Art GCSE Full Course	Reserve	Computer Science GCSE Full Course	Reserve	Drama GCSE Full Course	Reserve
D&T GCSE Full Course	Reserve	Food Preparation and Nutrition GCSE Full Course	Reserve	Geography GCSE Full Course	Reserve
GCSE PE GCSE Full Course <i>Choice</i>	Reserve	BTEC Digital Information Tech BTEC Tech Award Level 1/2	Reserve	History GCSE Full Course <i>Choice</i>	Reserve
BTEC Creative Media Production BTEC Tech Award Level 1/2	Reserve	Music GCSE Full Course	Reserve	PE Cambridge Nationals Certificate Level 1 & 2	Reserve
Photography GCSE Full Course	Reserve	RS GCSE Full Course <i>Reserve</i>	Reserve	Separate Science GCSE Full Course	Reserve
Spanish GCSE Full Course	Reserve				

- Students on the EBacc and Express Pathway can choose to do both Geography and History.
- Students in the Core and Engage Pathway will study both History and Geography,
- Students cannot pick to study both GCSE PE and Cambridge National PE .

Art GCSE Full Course	Reserve	Computer Science GCSE Full Course	Reserve	D&T GCSE Full Course	Reserve
Food Preparation and Nutrition GCSE Full Course	Reserve	Geography GCSE Full Course	Reserve	GCSE PE GCSE Full Course	Reserve
BTEC Digital Information Tech BTEC Tech Award Level 1/2	Reserve	History GCSE Full Course	Reserve	BTEC Creative Media Production BTEC Tech Award Level 1/2	Reserve
Music GCSE Full Course	Reserve	Photography GCSE Full Course	Reserve	RS GCSE Full Course	Reserve
Separate Science GCSE Full Course	Reserve	Spanish GCSE Full Course	Reserve		

School Approval

☐ School Approval

School Comments

Add any comments here

Student Comments

Add any comments here

Parent/Carer Approval

☐ Parent/Carer Approval

Once options have been selected click the ***Parent/Carer Approval box*** to confirm that you, as a parent/carer, have agreed for your child to study the selected subjects.

Express French Pathway Options

Name

Tutor group

Students will study Mathematics, English Language, English Literature, Separate Science, French, Geography or History, EFL (non-examined), and Core PE (non-examined).

- Humanities GCSE choose 1 (circle it) **Geography** or **History**
- Choose 2 Options (circle them) and 1 reserve (write reserve next to it) from:

Art

D&T

Photography

Food Preparation and Nutrition

Computer Science

RS

BTEC Media

History (If not selected above already)

Music

Cambridge National Sports Studies

Spanish

Geography (If not selected above already)

GCSE PE

BTEC Digital Information Technology

Drama

BTEC Health and Social Care

Summary

The deadline for requests is **Friday 28th March**

After this date you will be able to view the options selected but not change them.

It is important to note that option requests are not on a first come first served basis, but they do need to be made by **Friday 28th March**

If you no longer have your login credentials, we are unable to reissue them due to system changes.

Please fill out the form provided to your child and return it to their form tutor. This will not affect your child's option choices.

If you have any queries, please email **options@leftwichhigh.com**

Information Evening

Mr Kinder
Learning Leader Year 9



The
COUNTY
HIGH SCHOOL
Leftwich

AAA Student

Attendance

Appearance

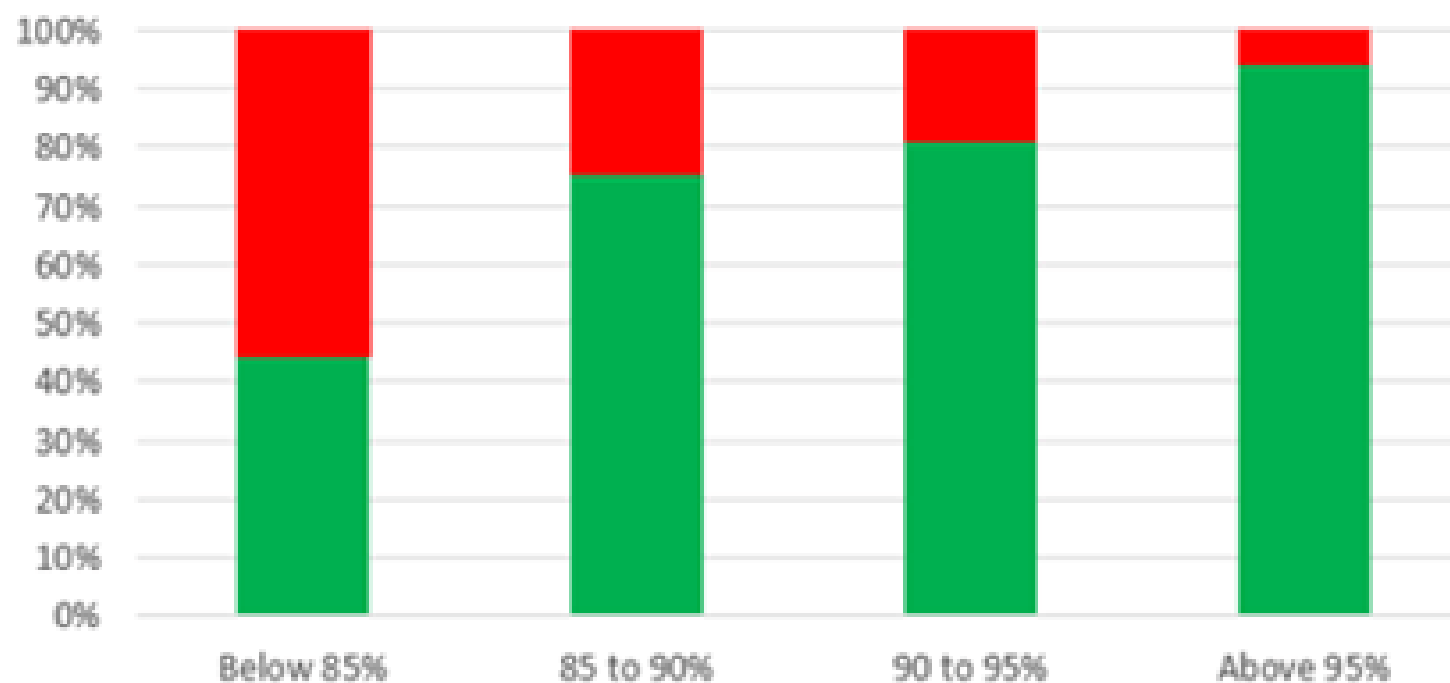
Attitude

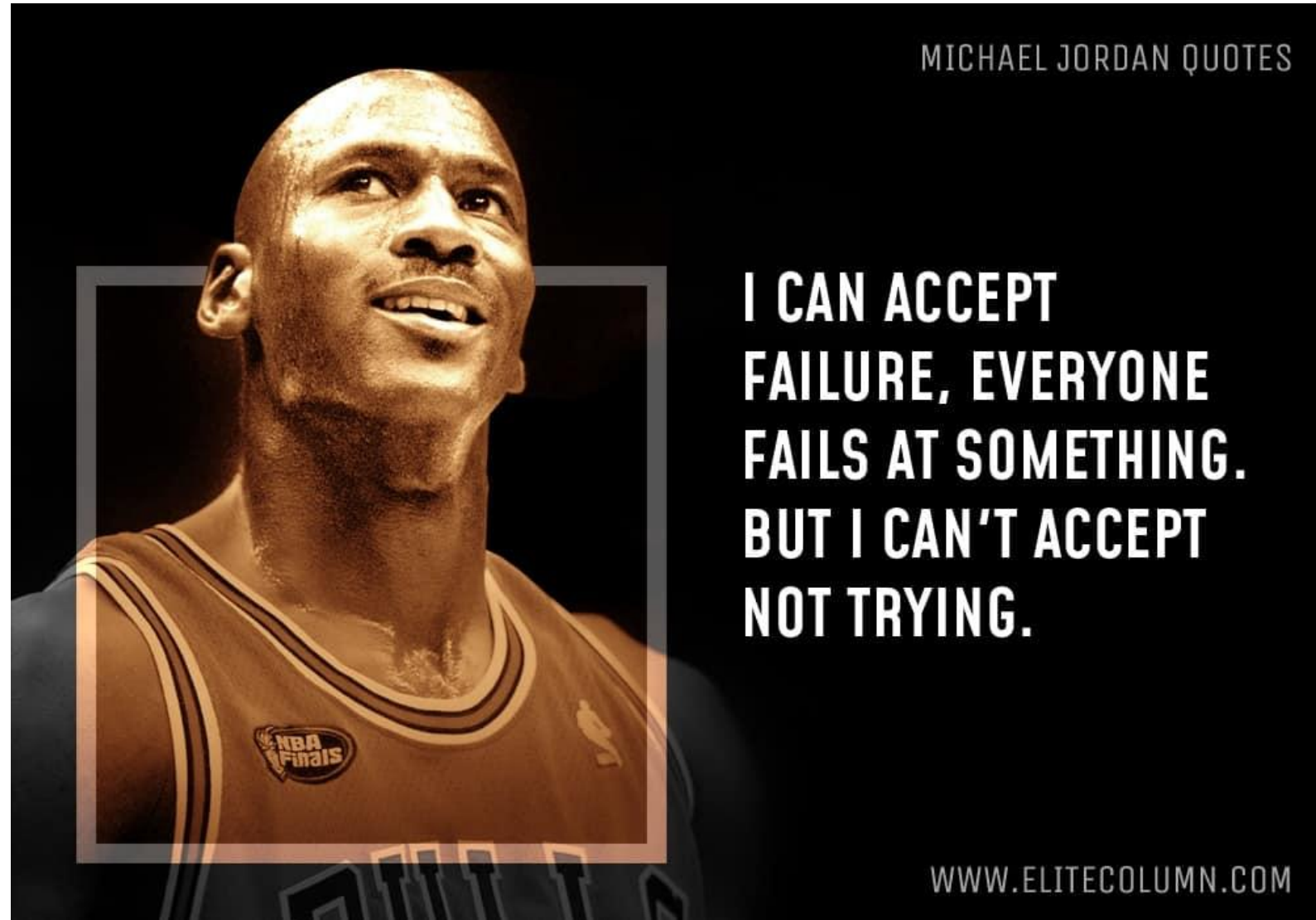


Just 17 days absent from school
a year could mean a drop in a
GCSE grade in all subjects!

'Moments Matter; Attendance Counts'

Attendance impacting 4EM





Y10's Perspective