

Transition Programme 2023



Parents' Information Evening – 20th April

Welcome and Introduction

Mr R Warburton, Headteacher

Overview of Transition Process

Mrs M Yates, Assistant Headteacher

Mrs H Marklove, Learning Leader: Year 7



The County High School Leftwich

- *'This is a friendly and welcoming school'*
- *'staff have very high expectations'*
- *'a broad, ambitious and exciting curriculum'*
- Students *'achieve highly*, fulfilling their academic potential' and are
- *'exceptionally well prepared for the next phase.'*



Outstanding (Ofsted, April 2022)



The
COUNTY
HIGH SCHOOL
Leftwich

Achieving Excellence

Achieving Excellence through providing the highest quality education in a caring environment to secure outstanding outcomes for all.



Achieving Excellence



- **Aspiration** - *Aim high, dream big*



- **Kindness** - *caring for yourself and others*



- **Pride** - *in who you are and the success of others*





'Teachers use their expert subject knowledge to help pupils.'





Enrichment Provision and Celebrating Success

Opportunities for educational visits









Ofsted Outstanding

“Leaders, together with members of the local governing body, trustees and staff, are committed to ensuring that every pupil is given every possible opportunity to succeed both academically and personally.” Ofsted (April 2022)

[Find Out More](#)

Website: leftwichhigh.com

Facebook: facebook.com/countyhighschoolleftwich

YouTube: youtube.com/channel/UCcRkQUVTO8hkKg5gLLXhGDQ

Twitter: [@leftwichhigh](https://twitter.com/leftwichhigh)

Email: admin@leftwichhigh.com

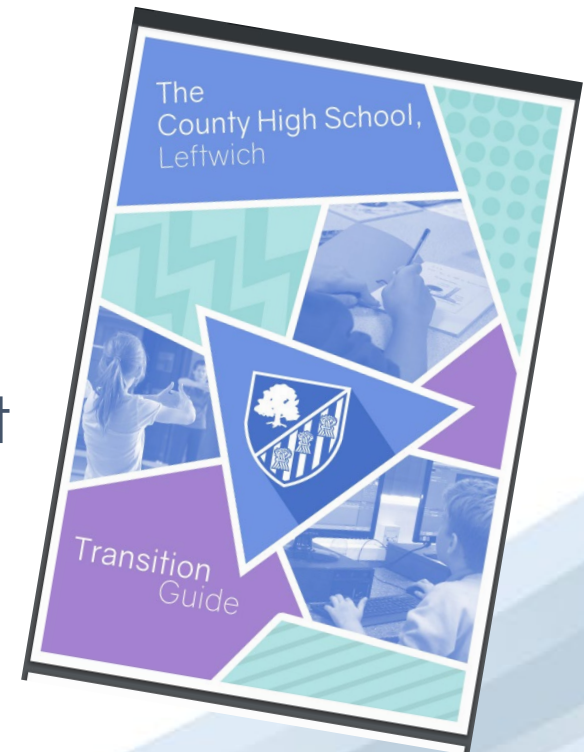
Overview



Date	Time	Event
Thursday 20th April	6.00pm	Year 6 Transition Parents' Information Evening
Monday 17th April – Friday 26th May	School Hours	Primary School Visit Programme (Meetings with teachers and students)
Wednesday 21 st June	4.00pm – 6.00pm	Biometric Registration (Drop-in for parents and students)
Thursday 22nd June	6.00pm	Parent & Student Information Evening – Introduction to Teaching and Learning, Student Support, Year Team
Thursday 6th July Friday 7th July	9am – 3pm	2- Day Induction Visit
Tuesday 5th September	School Hours (8.45am-3.20pm)	Start of school year

Primary School Visits 17th April – 26th May

- Visit to Primary School to meet with Year 6 teacher to discuss each child's learning and progress
- Introductory meeting with Year 6 children to discuss transition process, share the Transition Guide and short film



2 Day Induction Visit

Thursday 6th – Friday 7th July

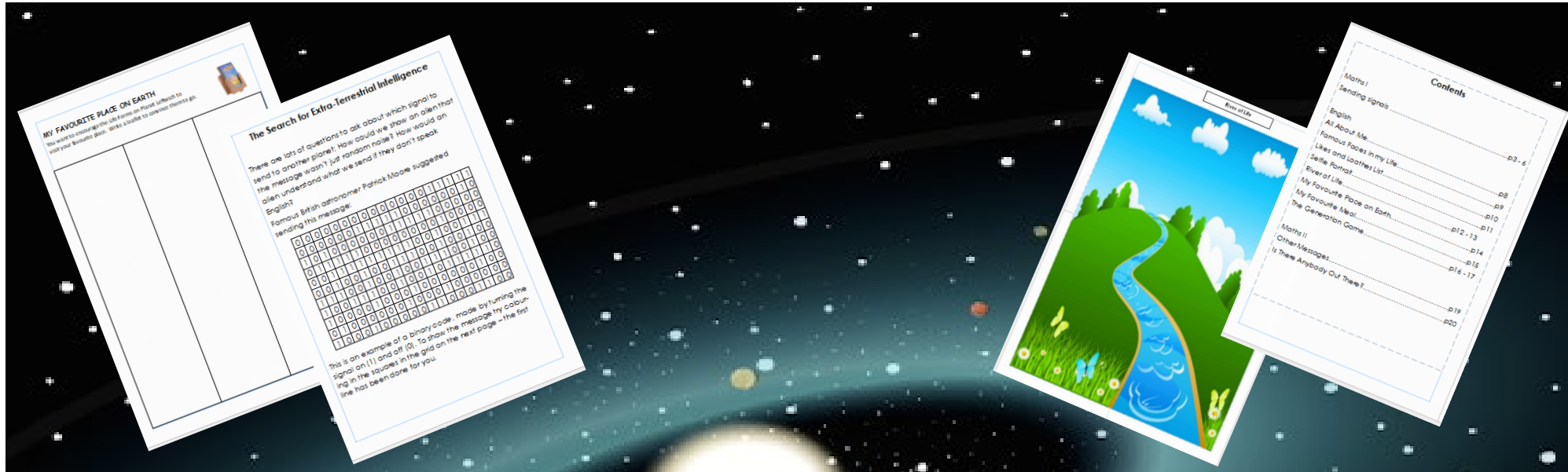
- Taster days following a sample timetable
- Team-building Experience ‘Welcome to Planet Leftwich’
- Students will be supported by Year Leader, Year 7 Tutors and representatives from Year 11 Junior Leadership Team

Transition Project 2023

Transition to 'Planet Leftwich'



Phased Transition to 'Planet Leftwich'



1. Year 6 teachers introduce 'Contact' from Planet Leftwich (June '23)
2. How to Survive on Planet Leftwich - Transition Visit (6-7 July '23)
3. Passport to Planet Leftwich - Maths and English activities (complete over Summer holidays)
4. Induction to CHSL (September '23)

School Uniform



We believe uniform helps instil a sense of pride in our school, contributing to our learning culture and preparing for the world of work.

- Jewellery is permitted in terms of a watch and where ears are pierced, one stud in the lower part of each ear only.

Please note:

Extreme hairstyles and un-natural colours are not allowed.

False lashes, gel, acrylic or false nails are also not allowed.



School Uniform

- Sportswear International –
http://www.leftwichhigh.com/documents/uniform_order_form.pdf
- Included in your welcome packs is a Sportswear International order form. Please make your orders direct to them*
- Deadline for orders: 4th August 2023
(delivery to home address)

* If your child is eligible for The Pupil Premium, please contact admin@leftwichhigh.com to discuss further



Next Steps



Parent *and* Student Information Evening – 22nd June 6pm

Led by SLT, this evening will share information with you on the school's approach to:

- Teaching and Learning
- Student Support
- Introduction to the Year 7 Team

Whilst you attend the Information Evening, your child will meet with their Form Tutor, Year Leader and other students in their Form Group