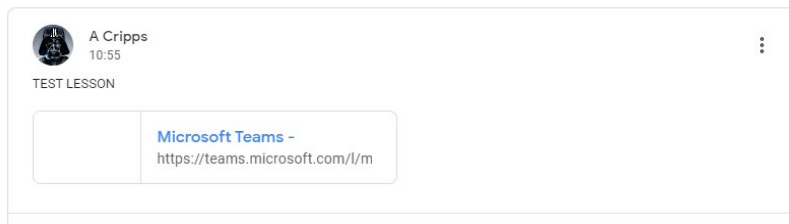
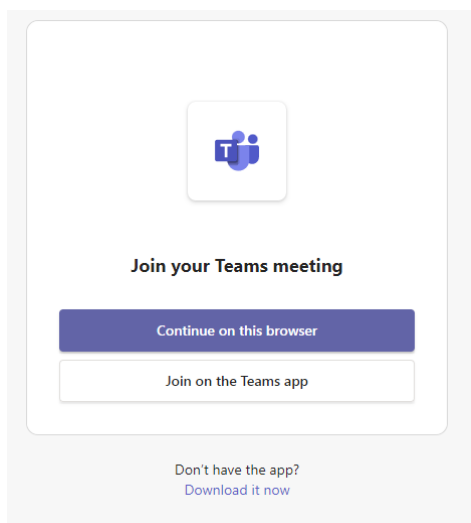


Joining a Live Lesson

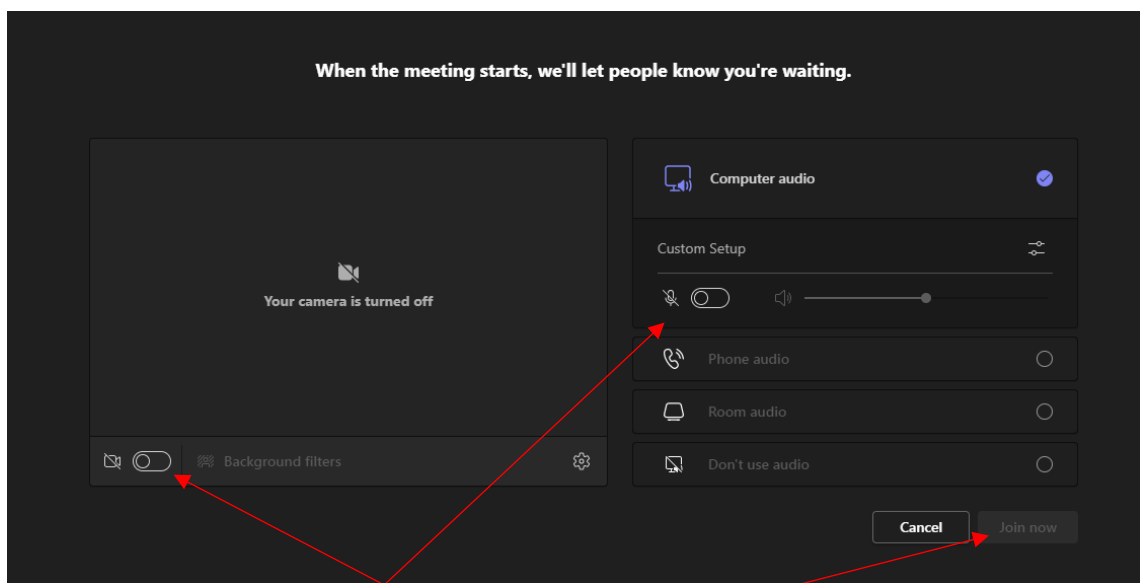
You will find an invite to the lesson linked on **Google Classroom**; you can also see the invite in your emails. Do not share this link.



If you have the Teams app installed you can click on Join on the Teams app, if not simply click Continue on this browser.



If prompts pop up to let the application use the mic and camera press agree. If prompted to add your name put your **full name and form**. If you put a nickname you will not be able to join the meeting or may be removed from the lesson.



Make sure to **turn off your mic and camera** then press Join now and your teacher will let you join.

Behaviour Expectations for Live Lessons (Student Guidance)

When attending a live lesson delivered by your teacher, your behaviour must be in line with our usual Behaviour Expectations and must be appropriate at all times.

Be Ready to Learn:

1. Be punctual when attending a live tutorial session and join the session on time.
2. Dress appropriately for learning.
3. Be seated in an appropriate area of the home with a neutral background.

Be Respectful and Safe:

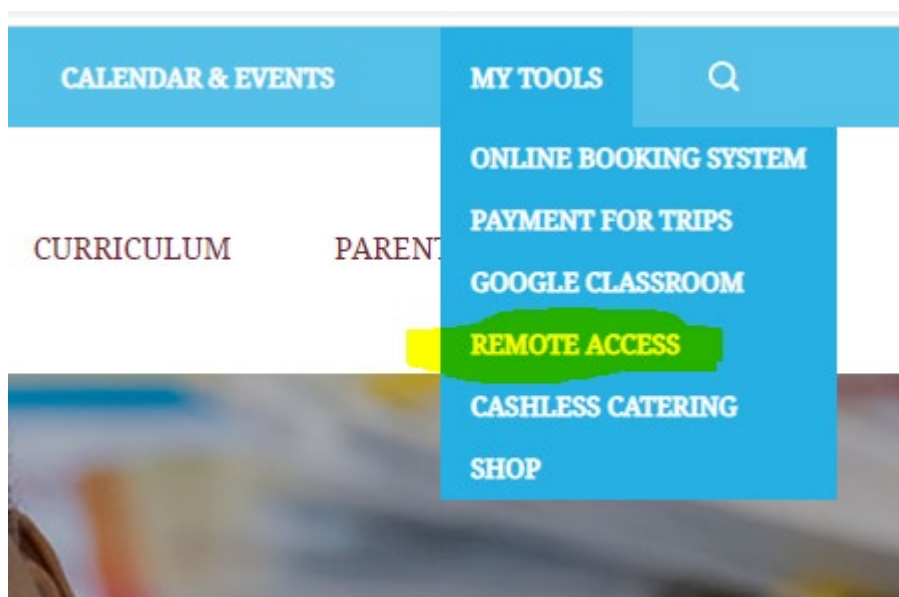
1. Turn your camera and microphone off.
2. Interact respectfully and safely if you are required to communicate during the live session, using the online functions (Hand-Up/Chat).
3. Follow instructions from your teacher as you would in a face-to-face lesson.

Embrace Opportunities:

1. Follow your timetable to ensure you access the full offer of online and live learning opportunities.
2. Complete any online learning activities to the best of your ability.
3. Seek opportunities to work together online, where appropriate, to consolidate your learning.

Access to Google Classroom and all apps

Go to the school website and click my tools then remote access. If you are using a phone to access, you need to press the menu button to see this (three lines)



Log in using the username and password you use to log in to the school computers. This password is unique to the student and created by themselves. Should you need a password resetting from home, please email passwordreset@leftwichhigh.com stating the name and year group of the student whose password needs to be changed.

All the apps used by the school can be accessed from here. Log ins for those if prompted.

SAM Learning

Centre ID : CW9CH

Username : email address

Password : your date of birth followed by your initials , for example: 190484ac

Maths Watch

Username : First two letters of your first name with a capital , then your surname @leftwichhigh , for example AnCripps@leftwichhigh

Password : Same as above

Active Learn

Username : First and Surnames with capital letters , for example AnthonyCrosswell
password : Created by themselves can be reset through email.

Seneca

Username : School email address username@leftwichhigh.com

password : Created by themselves can be reset through email.